



**Data Governance: improving Data
Accountability and Business
Processes**

**Philip Howard
Research Director
Bloor Research**

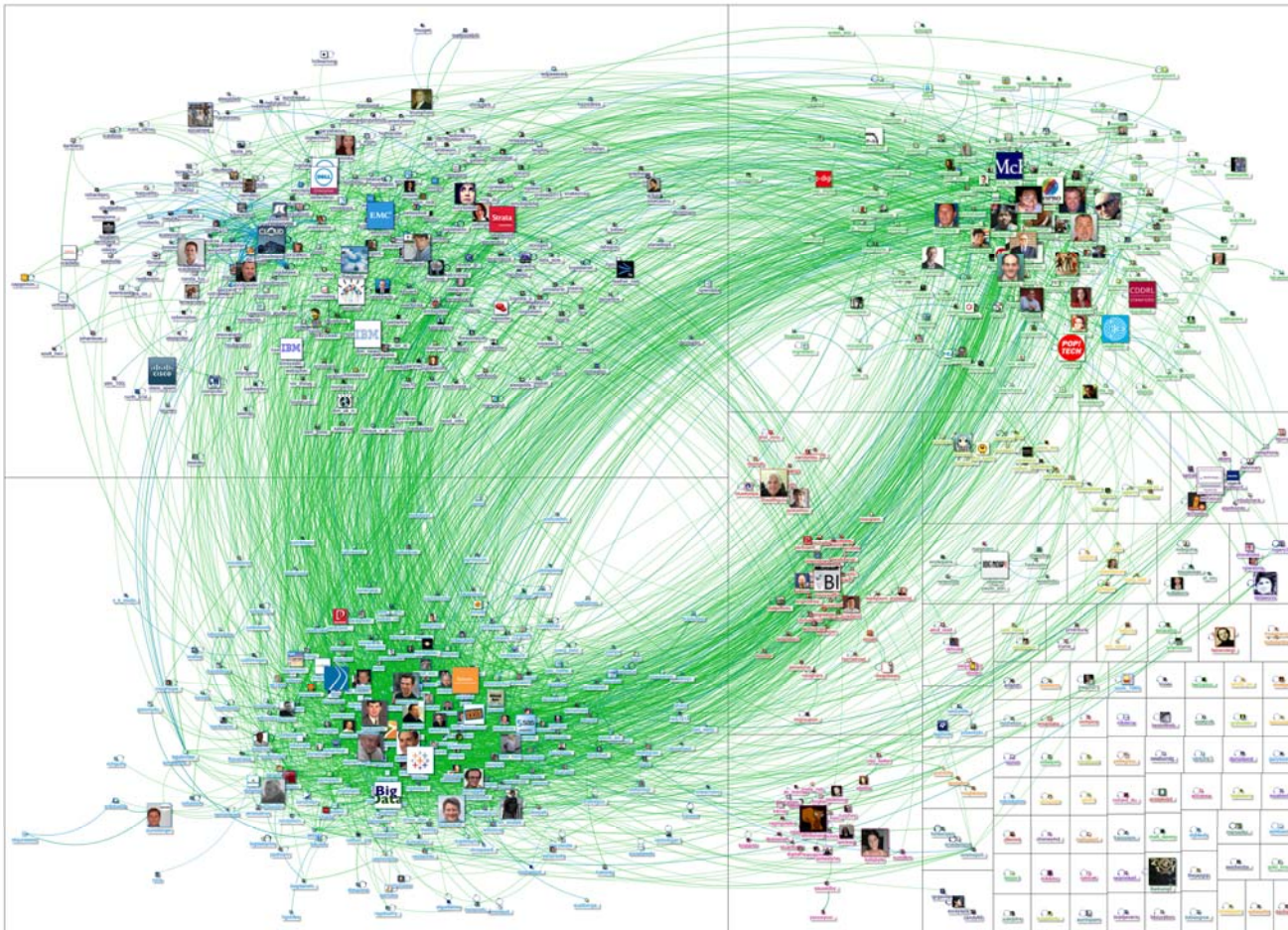
- ▣ What is data governance?
- ▣ Where does it apply?
- ▣ Why aren't conventional data quality tools enough?
- ▣ What is actually involved in data governance per se?

“Data governance is a discipline that embodies a convergence of data quality, data management, data policies, business process management, and risk management surrounding the handling of data in an organisation.... Data governance consists of a set of **processes** that ensure that important data assets are formally managed throughout the enterprise. Data governance ensures that data can be trusted and that people in the **business** can be made accountable for any adverse event that happens because of low data quality. It is about putting people in charge of fixing and preventing issues with data so that the enterprise can become more efficient.”

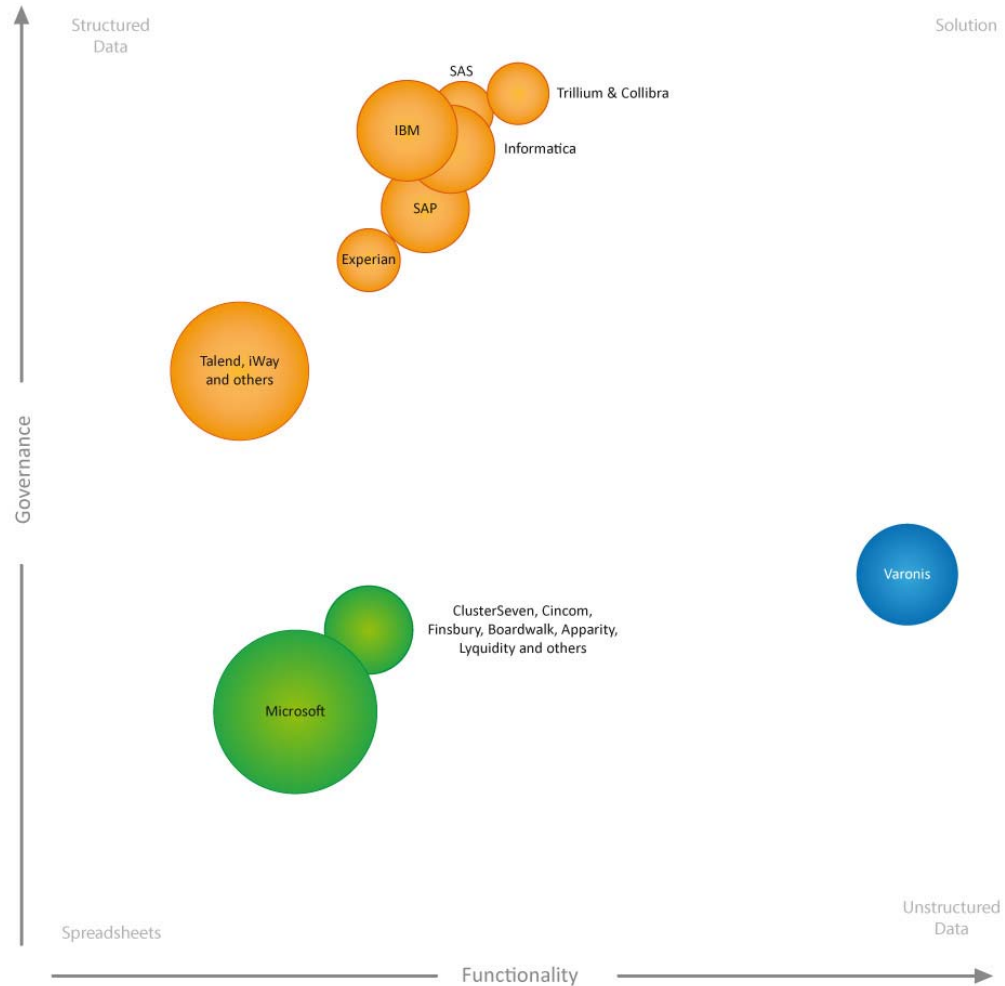
- *Wikipedia (edited)*

- ☰ Does data governance encompass compliance and/or security? Is data masking, for example, a part of the remit?
- ☰ The data quality tools mentioned tend to be focused on structured data—what about unstructured data? Spreadsheets? Machine-generated data?
- ☰ To what extent does data governance apply to ‘big data’?
- ☰ Traditionally, data governance has been run by a Data Governance Council but should this be the role of the Chief Data Officer?

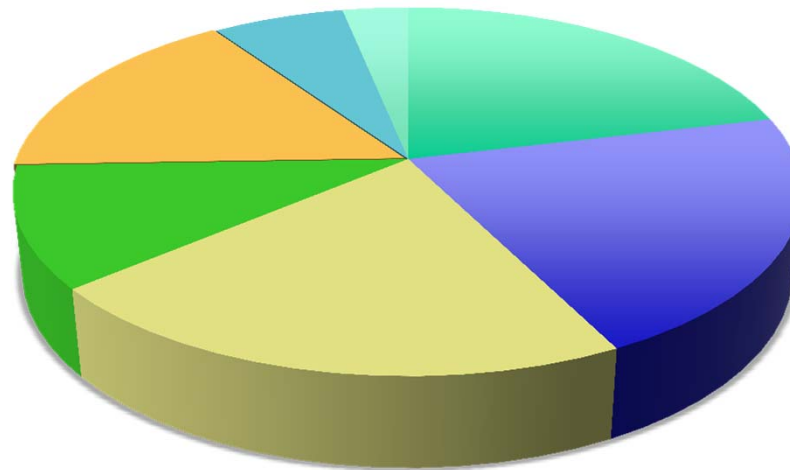
Social media network connections among Twitter users



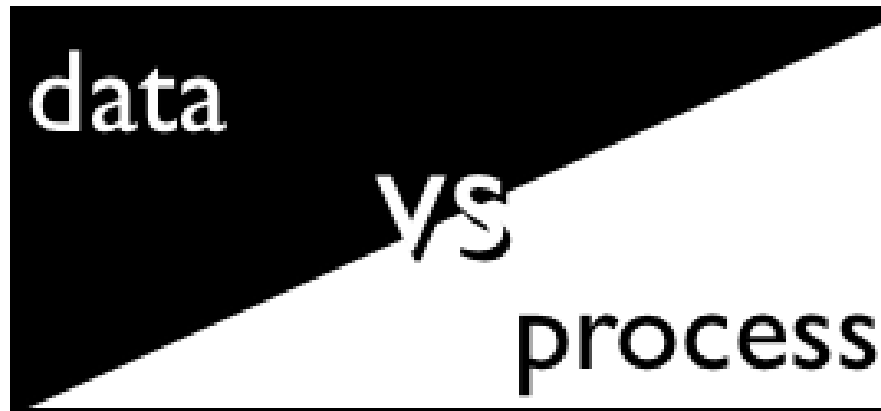
Created with NodeXL (<http://nodexl.codeplex.com>) from the Social Media Research Foundation (<http://www.smrfoundation.org>)

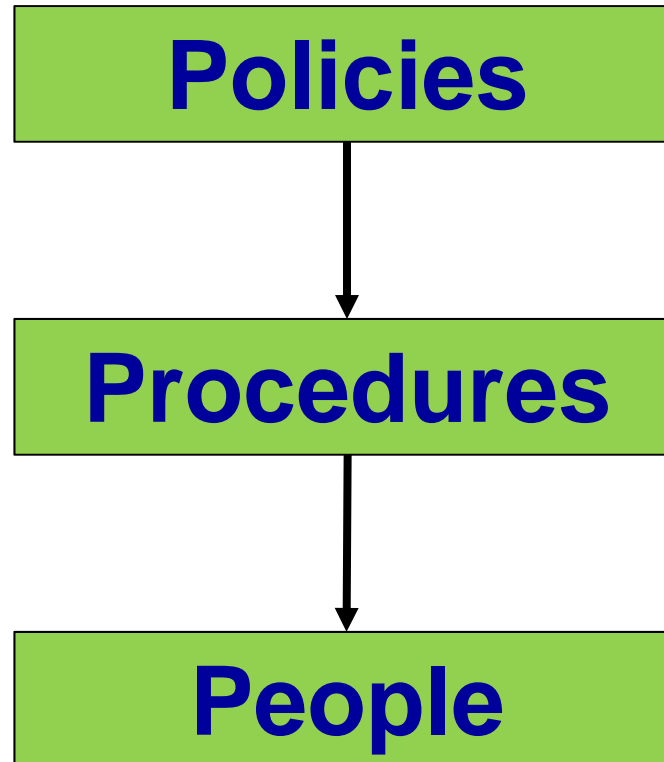


Functions typically offered by
Data Quality vendors



- Data profiling
- Data quality monitoring
- Business glossary
- Issue tracking
- Data quality
- MDM
- Workflow





Policy management

-  Workflow

-  Collaboration

-  Monitoring

Procedure management

-  Issue tracking

-  Traceability

-  Proof points

-  Monitor policies

- Data governance is essentially a business issue, which means:
 - Reference data management (may be MDM) and business rule management
 - Business (semantic) Glossary
 - Managing responsibility
 - Interface for data stewardship

- ☰ Data governance is about the processes involved in managing data to meet business goals
- ☰ Data governance applies to all sort of data
- ☰ The focus of data quality is on the processes involved in its management
- ☰ You need tools that support the policies and procedures involved in data governance

